

# January 2018 Letting Report

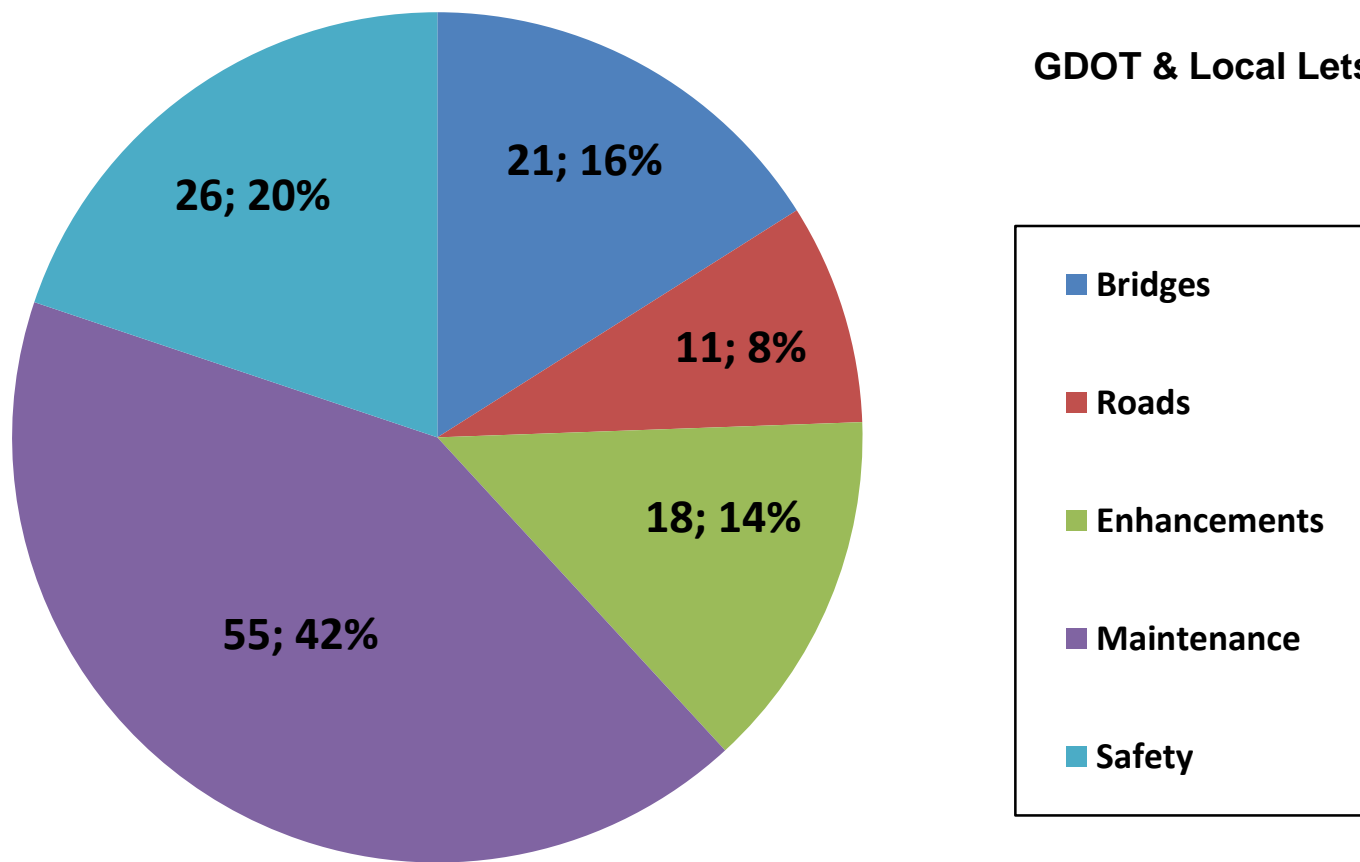
Albert V. Shelby, III  
Director of Program Delivery

December 14, 2017

# Fiscal Year 2018 Letting Report

## Number of Projects Let in FY 2018

(Contractor Low Bid Award Data)



***Does not include LMIG Projects***

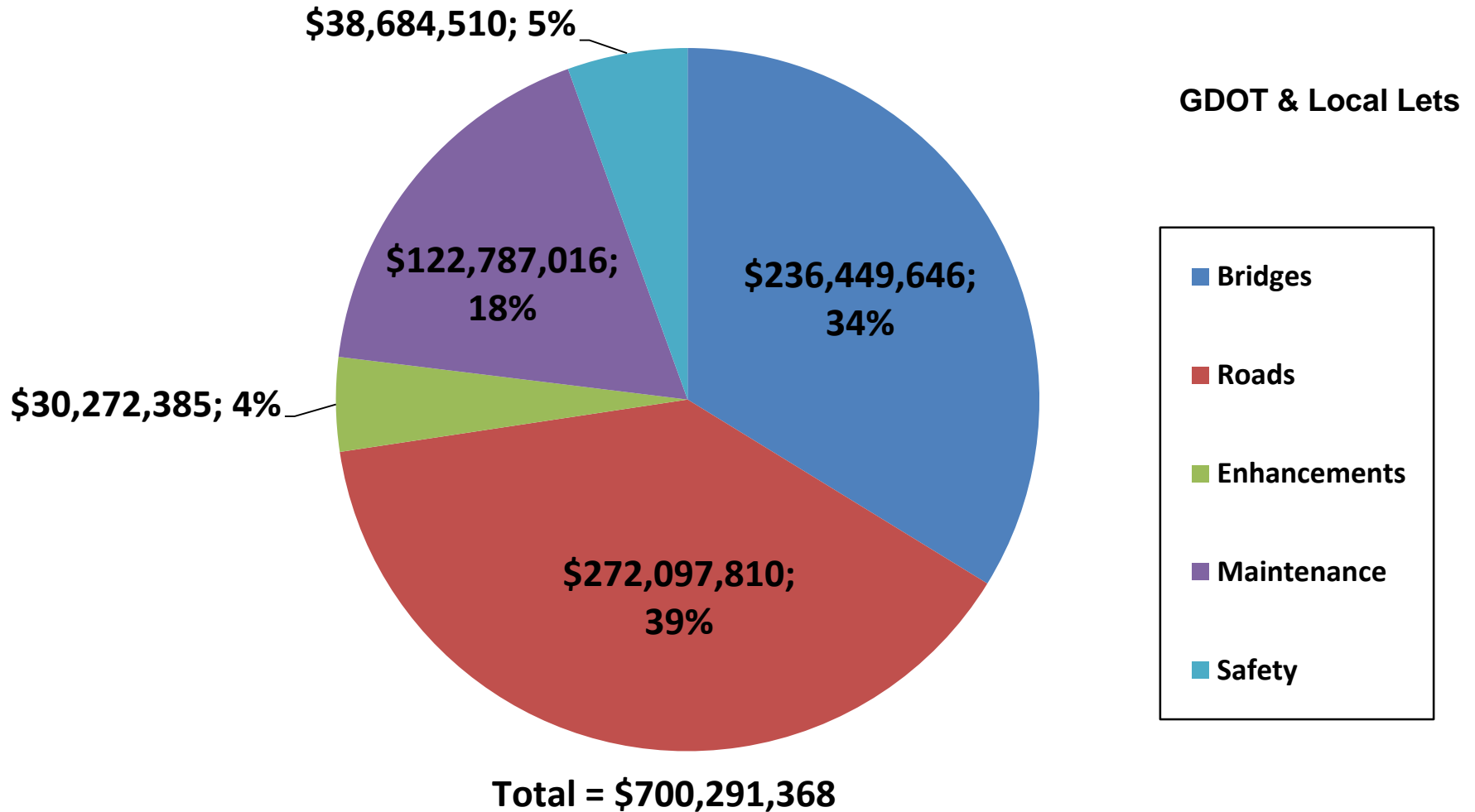
**Total = 131**

*As of November 29, 2017  
Source Construction Bidding Administration*

# Fiscal Year 2018 Letting Report

## Dollar Amount of Projects Let in FY 2018

(Contractor Low Bid Award Data)



**Does not include LMIG Projects**

As of November 29, 2017  
Source Construction Bidding Administration

# November 2017 Letting Results

Summary	Presented to GDOT Board (Includes Adjustments)	Low Bid (Awarded to Contractor)	Low Bid w/Adjustments (Total Project Obligation)
GDOT Let (Project Count)	35	34	34
GDOT Let (Dollars)	\$80,611,010	\$68,720,965	\$70,216,372
Local Let (Project Count)	5	N/A Local Let	N/A Local Let
Local Let (Dollars)	\$11,395,301	N/A Local Let	N/A Local Let

\*Low Bid Award Amount includes the Deferred and Awarded projects.  
Does not include Engineering and Inspection, Utilities, Liquid AC, Incentives, LMIG and Rejected projects.

# **GDOT and Local Let Projects**

## January 2018 Letting

# GDOT and Local Let Projects

## January 2018 Letting

Project ID	Description	Primary County	Primary Work Type	Congressional District	Project Let By	Project Sponsor
0013319	SUWANNEE CANAL ROAD FROM SR 121 TO OKEFENOKEE ADVENTURES	CHARLTON	Resurface & Maintenance	001	LOC	Charlton County
M005624	SR 204 SPUR FROM 0.40 MI W OF PIN POINT RD TO MCWORTER RD	CHATHAM	Resurface & Maintenance	001	DOT	GDOT
0013643	I-16 @ 6 LOCS IN DIST 2 & @ 5 LOCS IN DIST 5 - CABLE BARRIERS	APPLING	Barriers	001, 012	DOT	GDOT
M005183	SR 17 FROM SR 30 TO CS 555/SAMUEL SMALLS SENIOR AVE	EFFINGHAM	Resurface & Maintenance	001, 012	DOT	GDOT
M005018	SR 240 CONN FROM SR 240 TO SR 127	MARION	Resurface & Maintenance	002	DOT	GDOT
M005134	SR 520 FROM CHATTAHOOCHEE COUNTY LINE TO SR 27/US 280	STEWART	Resurface & Maintenance	002	DOT	GDOT
M005606	SR 90 FROM SR 137 TO TALBOT COUNTY LINE	TAYLOR	Resurface & Maintenance	002	DOT	GDOT
M005281	SR 30/US 280 FROM SR 90/CRISP TO 0.02 MI E OF 6TH ST/WILCOX	CRISP	Resurface & Maintenance	002, 008	DOT	GDOT
M005615	SR 32 FROM E OF NS #733560G/LEE TO SR 300/WORTH	LEE	Resurface & Maintenance	002, 008	DOT	GDOT
M005088	SR 109 FROM SR 18 TO SR 3	PIKE	Resurface & Maintenance	003	DOT	GDOT

# GDOT and Local Let Projects

## January 2018 Letting

Project ID	Description	Primary County	Primary Work Type	Congressional District	Project Let By	Project Sponsor
M005423	SR 109 @ CSX #937941L - BRIDGE REHAB	TROUP	Bridges	003	DOT	GDOT
M005402	I-285 FM SR 42/DEKALB THRU CLAYTON TO S OF CONLEY RD/FULTON	FULTON	Resurface & Maintenance	005	DOT	GDOT
M005697	SR 154 @ SR 166 & @ I-285 - BRIDGE REHAB	FULTON	Bridges	005	DOT	GDOT
M005652	SR 9 FROM SR 3 TO CS 1865/LAKE PLACID DRIVE	FULTON	Resurface & Maintenance	005, 006, 011	DOT	GDOT
M005651	SR 9 FROM CS 214/SUNNY BROOK LANE TO SR 120	FULTON	Resurface & Maintenance	006	DOT	GDOT
M005581	SR 371 FROM SR 9 TO SR 20	FORSYTH	Resurface & Maintenance	007	DOT	GDOT
M005019	SR 38 FM CS 1005/FOREST STREET TO E OF VALDOSTA CITY LIMITS	LOWNDES	Resurface & Maintenance	008	DOT	GDOT
M005036	SR 38 WE FROM SR 38 TO SR 38	LOWNDES	Resurface & Maintenance	008	DOT	GDOT
0014935	TUMBLING CREEK ROAD @ NORFOLK SOUTHERN RAILROAD	HALL	Bridge	009	LOC	Hall County
M005214	SR 60 FROM SR 9 TO UNION COUNTY LINE	LUMPKIN	Resurface & Maintenance	009	DOT	GDOT

# GDOT and Local Let Projects

## January 2018 Letting

Project ID	Description	Primary County	Primary Work Type	Congressional District	Project Let By	Project Sponsor
M005577	SR 15 FROM CLARKE CO LINE TO CR 605/STEVE REYNOLDS IND BLVD	JACKSON	Resurface & Maintenance	009	DOT	GDOT
M005582	SR 284 FROM SR 11BU TO CHATTAHOOCHEE RIVER	HALL	Resurface & Maintenance	009	DOT	GDOT
M005583	SR 211 FROM SR 53 TO SR 60	HALL	Resurface & Maintenance	009	DOT	GDOT
132980-**	SOUTH CHEROKEE ROAD @ CSX RAILROAD IN SOUTH SOCIAL CIRCLE	WALTON	Bridges	010	DOT	GDOT
M005596	SR 104 FROM RICHMOND COUNTY LINE TO CR 228/SILVER LAKE DRIVE	COLUMBIA	Resurface & Maintenance	012	DOT	GDOT
M005620	SR 24 FROM SR 21BU TO SR 73	SCREVEN	Resurface & Maintenance	012	DOT	GDOT
M005405	SR 70 FROM SR 154 TO SR 92	FULTON	Resurface & Maintenance	013	DOT	GDOT
M005654	SR 14 CONN FROM SR 14 ALT TO I-85	FULTON	Resurface & Maintenance	013	DOT	GDOT
M005635	SR 3/US 41 FROM CR 666/OLD DIXIE HWY TO SR 52	WHITFIELD	Resurface & Maintenance	014	DOT	GDOT
M005647	SR 1 @ 3 LOCS - BRIDGE PRESERVATION	FLOYD	Bridges	014	DOT	GDOT

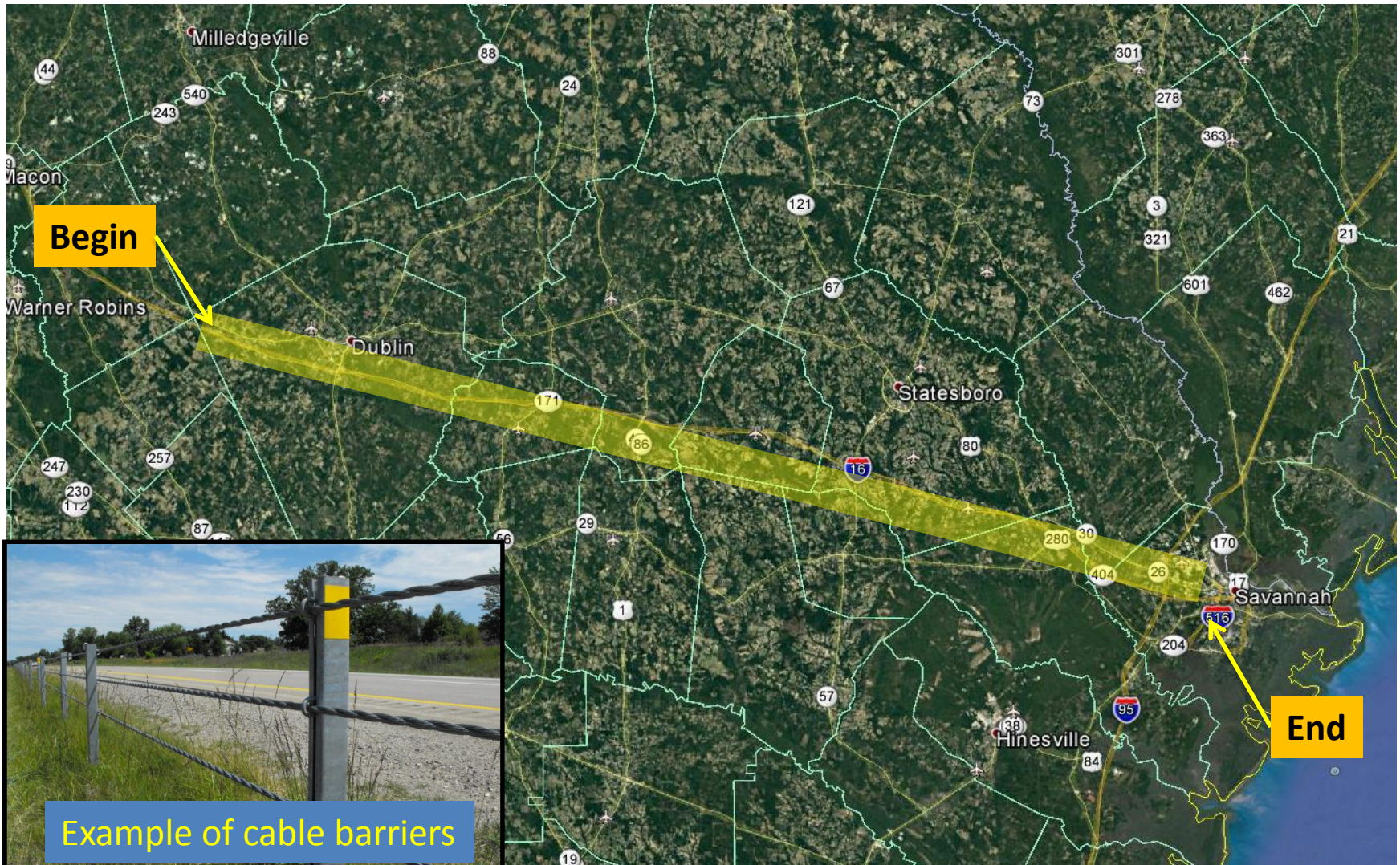
\*\*Bridge Bond Project



# **I-16 @ 6 LOCS IN DIST 2 & @ 5 LOCS IN DIST 5 - CABLE BARRIERS**

## **Safety Project in Multiple Counties**

### **Congressional Districts 1 and 12**





# **SR 520 FROM CHATTAHOOCHEE COUNTY LINE TO SR 27/US 280 Resurfacing Project in Stewart County Congressional District 2**

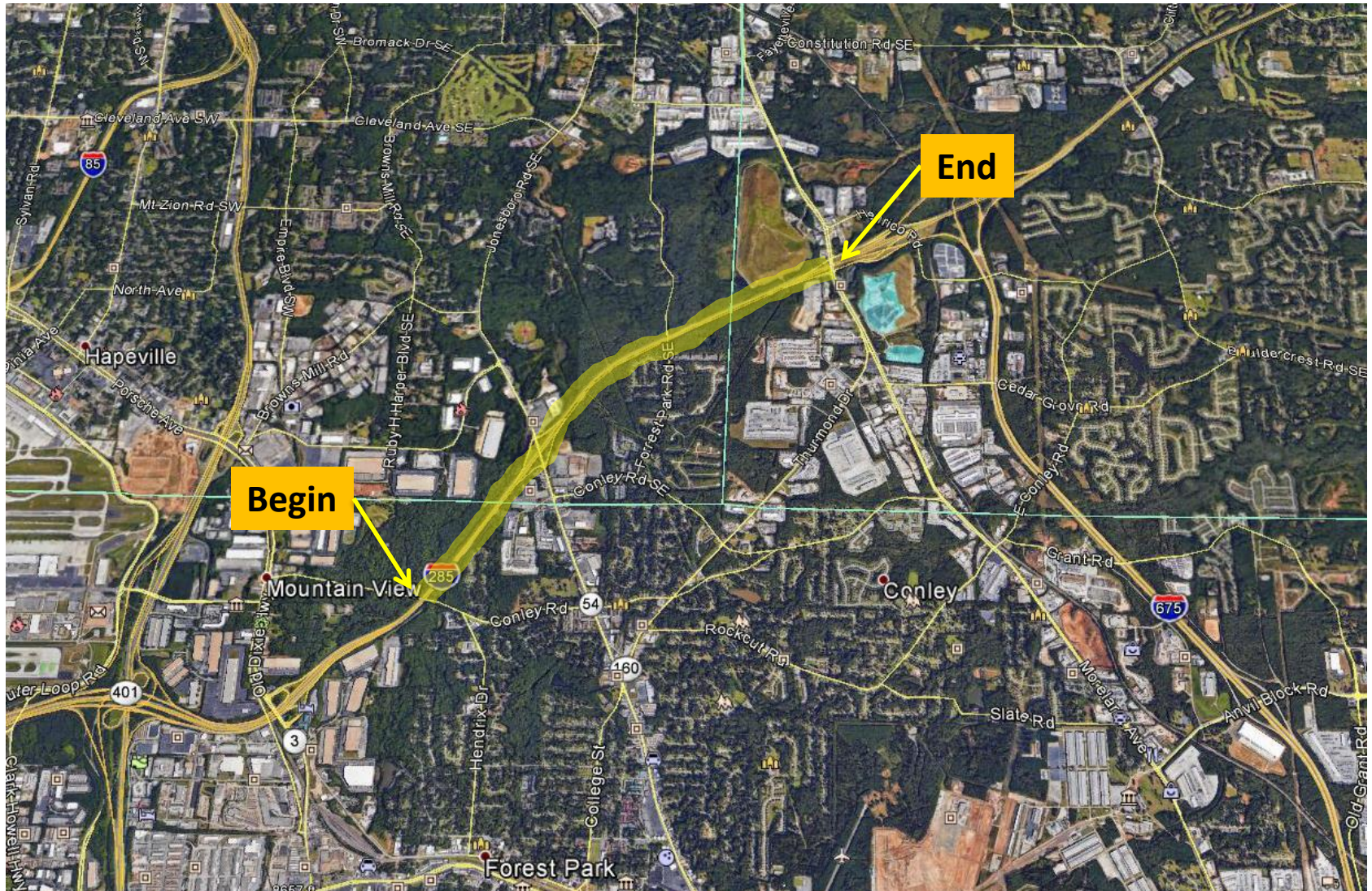




# **I-285 FM SR 42/DEKALB THRU CLAYTON TO S OF CONLEY RD/FULTON**

## **Resurfacing Project in Clayton, DeKalb, and Fulton Counties**

### **Congressional District 5**





# **SR 9 FROM SR 3 TO CS 1865/LAKE PLACID DRIVE**

## **Resurfacing Project in Fulton County**

### **Congressional Districts 5, 6, and 11**





# **TUMBLING CREEK ROAD @ NORFOLK SOUTHERN RAILROAD**

## **Bridge Project in Hall County**

### **Congressional District 9**

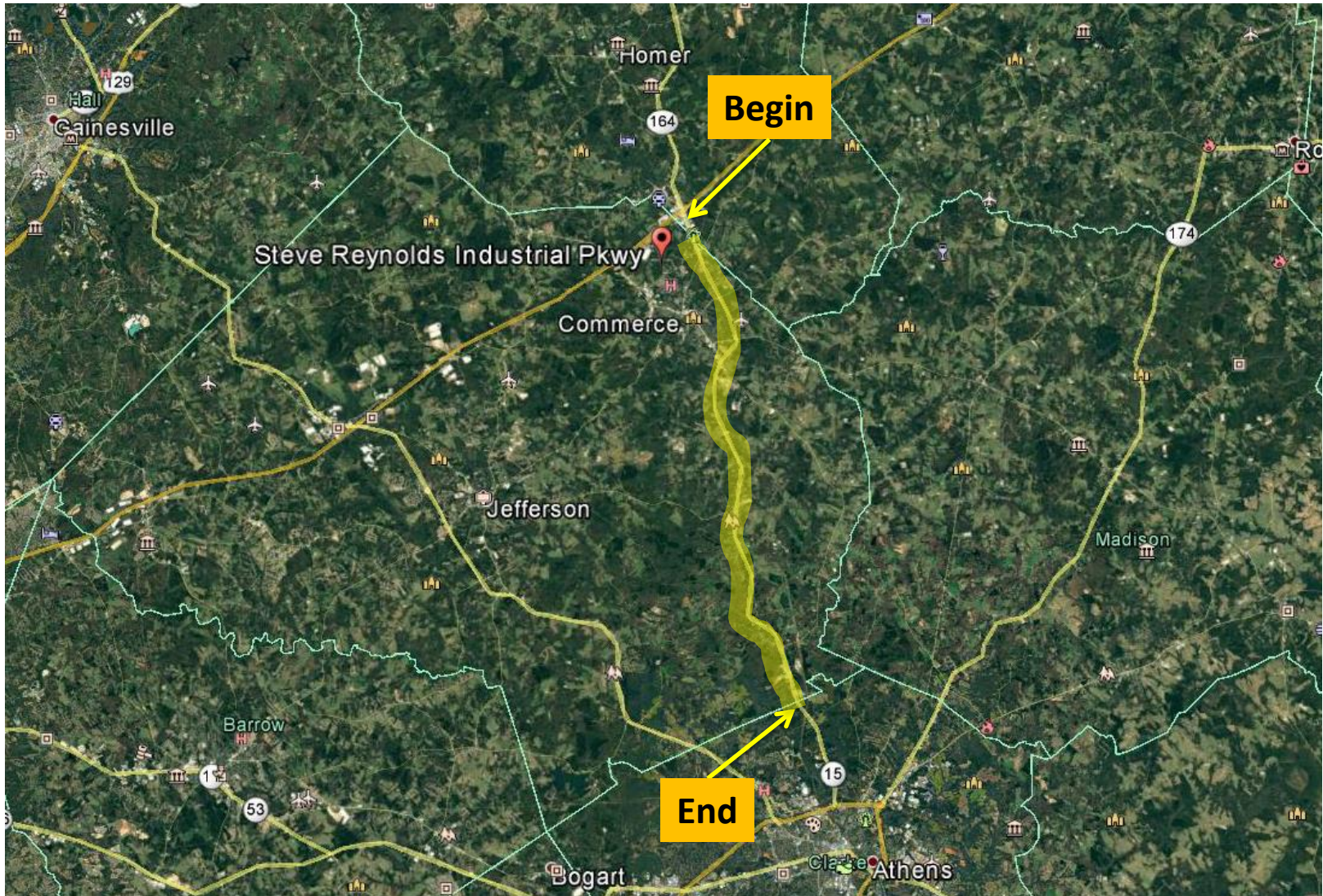




# **SR 15 FROM CLARKE CO LINE TO CR 605/STEVE REYNOLDS IND BLVD**

## **Resurfacing Project in Jackson County**

### **Congressional District 9**





# **SOUTH CHEROKEE ROAD @ CSX RAILROAD IN SOUTH SOCIAL CIRCLE**

## **Bridge Replacement Project in Walton County**

### **Congressional District 10**





# **SOUTH CHEROKEE ROAD @ CSX RAILROAD IN SOUTH SOCIAL CIRCLE**

## **Bridge Replacement Project in Walton County**

### **Congressional District 10 (Continued)**





# SR 104 FROM RICHMOND COUNTY LINE TO CR 228/SILVER LAKE DRIVE Resurfacing Project in Columbia County Congressional District 12



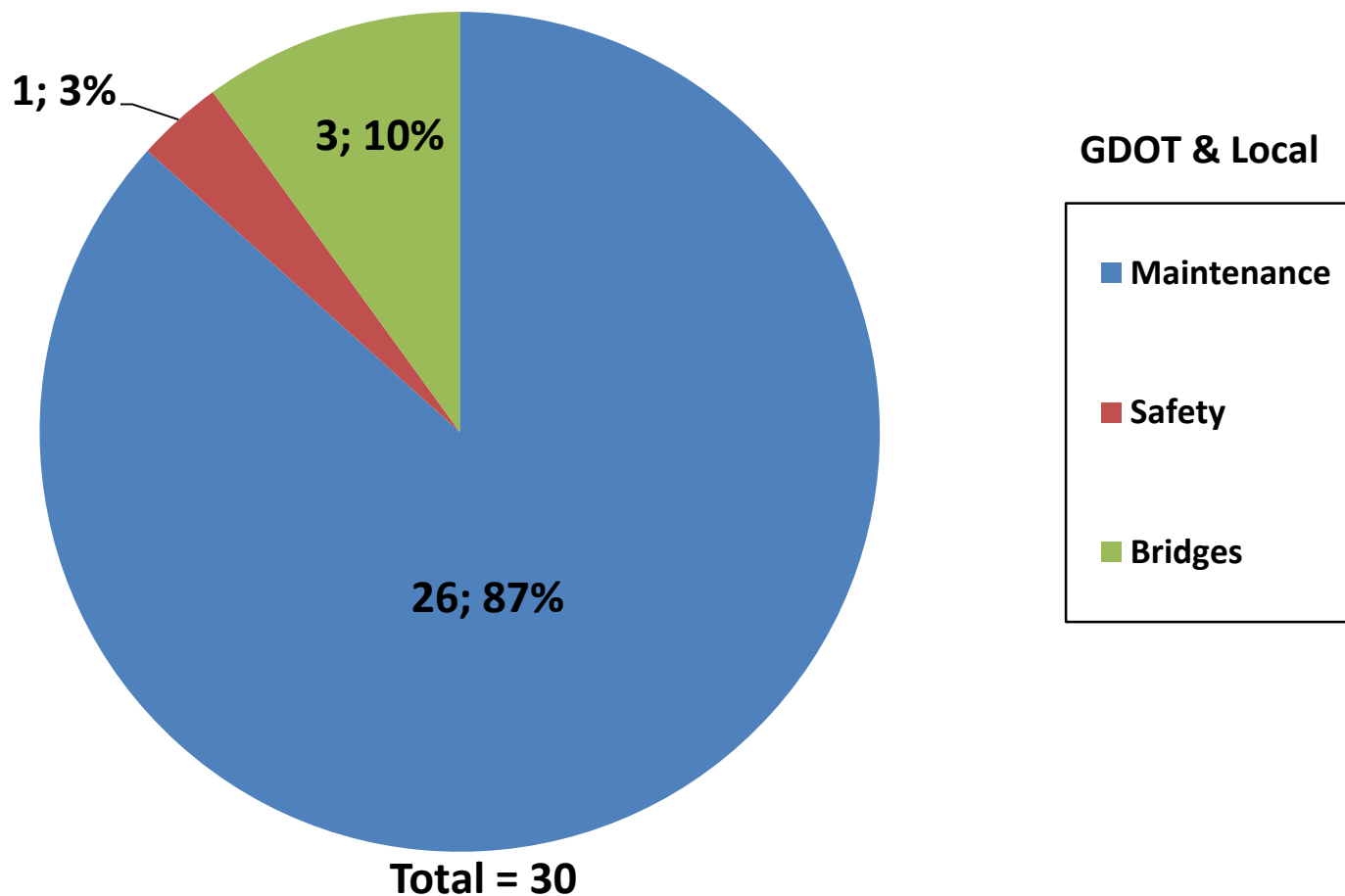


## **SR 24 FROM SR 21BU TO SR 73 Resurfacing Project in Screven County Congressional District 12**



# Fiscal Year 2018 Letting Report

## Number of Projects January 2018 Letting



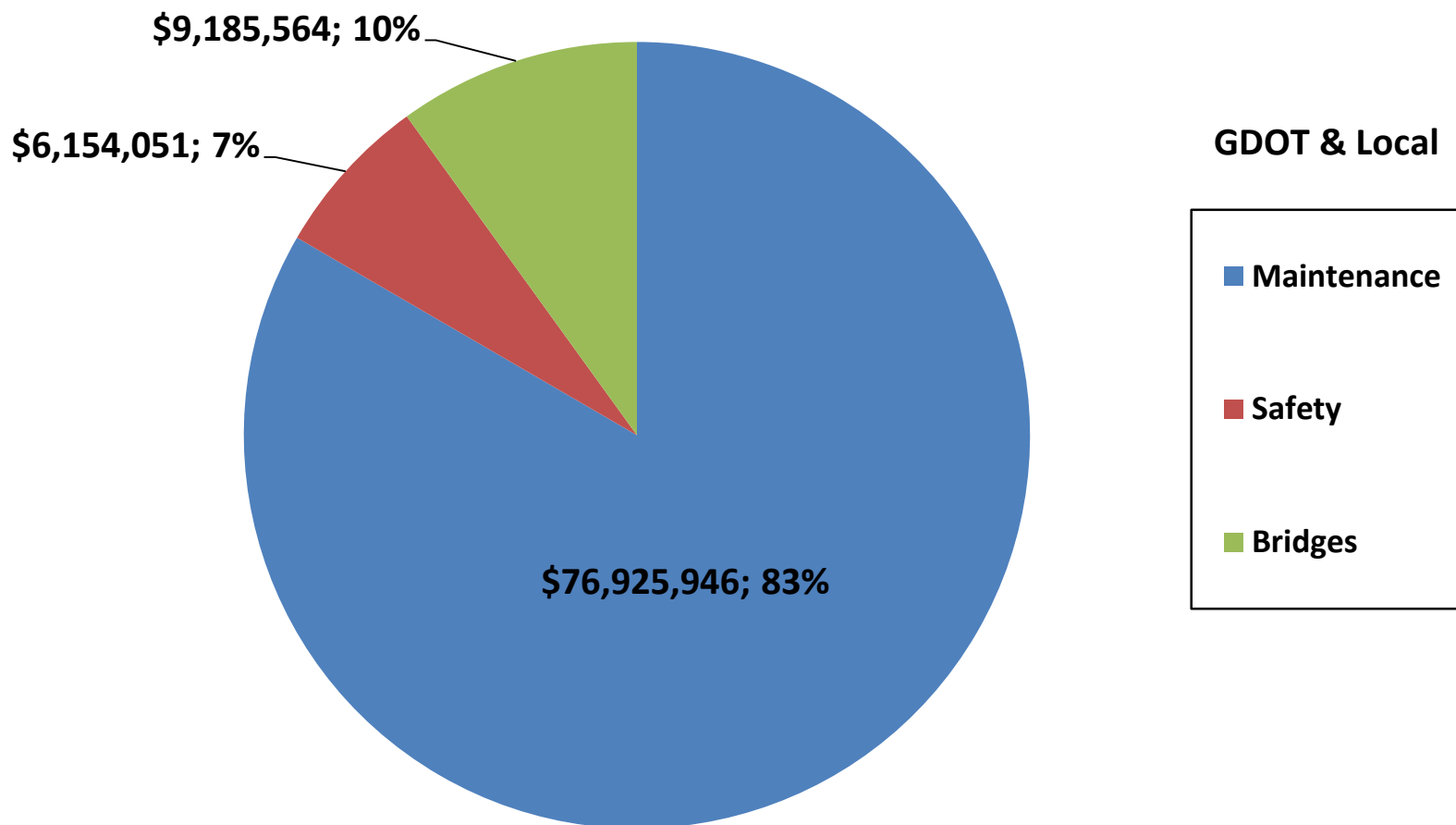
***Does not include LMIG Projects***

*As of December 6, 2017  
Source TPro – Chief Approved FY '18 Letting List*

# Fiscal Year 2018 Letting Report

## Dollar Amount of Projects

### January 2018 Letting



GDOT & Local

■ Maintenance

■ Safety

■ Bridges

**Total = \$92,265,562**

***Does not include LMIG Projects***

*As of December 6, 2017*

*Source TPro – Chief Approved FY '18 Letting List*

# Board Approval



# **Proposed Revisions To The Construction Work Program**

**Jay Roberts**  
**Director of Planning**

**December 14, 2017**

# December 2017 CWP Revision

## ***Board Revisions:***

1. P.I. No. 0015636, Habersham County, CR 225/Tugalo Short Cut Road at Little Panther Creek  
Bridge Replacement/Reconstruction/Rehabilitation in Congressional District 9  
  
Action: Change in Description

# January 2018 CWP Revision

## ***Board Revisions:***

1. P.I. No. 122200-, Union County, SR 11 and CS 524/Murphy Highway from CS 547/Blue Ridge Street to SR 235  
Reconstruction/Rehabilitation/Widening in Congressional District 9

Action: Change in Description